



SAFETY PLAN

2014

ZLL Safety Plan
2014

I. INTRODUCTION

The Zionsville Little League was organized in 1952 in Zionsville, Indiana. Zionsville Little League is a volunteer organization serving boys and girls between the ages of 6-18 years old. The Zionsville Little League draws its players from Eagle and Union townships of Boone County, Indiana. All practices and games are played on the nine diamonds located in Zionsville's Lion's Park. Lions Park is a private park maintained by the Zionsville Little League and the Zionsville Lions Club. Lions Park Field Layout Map is **attached hereto as Appendix A.**

The Zionsville Little League is primarily a Spring League. However, in the fall the League sponsors a Fall League for boys between the ages of 6 and 12. The League also sponsors travel teams as well as All-Star teams at each age level which teams play outside the League's internal recreational games.

The League consists of boys baseball and girls softball divided into the following divisions:

Boys Baseball		Girls Softball	
League	Age	League	Age
		Senior	Typically 15-16 y/o
Seniors	Typically 16-18 y/o	Junior	Typically 13-14 y/o
Juniors	Typically 13-15 y/o	Major	11-12 y/o
50/70	11-13 y/o	Minor	8-11 y/o
Major	10-12 y/o	Rookie	Instructional in nature < 8 y/o
Minors	9-10 y/o		
Rookie-8	8 y/o		
Rookie-6-7	6-7 y/o		

The ZLL Board of Directors directs the operation of the Zionsville Little League. The Board of Directors in turn appoints individuals to fulfill various functions necessary for the efficient operations of the League. A listing of the Board of Directors and their specific responsibilities is **attached hereto as Appendix B.**

II. SCOPE OF THE SAFETY PLAN

The goal of the Safety Plan is to develop guidelines for increasing the safety of the Zionsville Little League's activities, equipment and facilities through education, compliance and reporting. The League commits itself to providing the necessary organizational structure to develop, monitor and enforce the safety of its participants, volunteers and the residents of Zionsville, Indiana.

ZLL Safety Plan
2014

III. DIRECTOR OF SAFETY

The Zionsville Little League Board of Directors shall appoint one of its members as Safety Director who will be on file with Little League International. It shall be the responsibility of the Safety Director to create and update the League's safety plan and to enforce its provisions. The Safety Director will complete the annual Little League facility survey and shall also oversee required safety training of the League's participants, managers, coaches, umpires, and other volunteers. Safety training topics will include Lions Park traffic, child safety, and proper player hydration. The Safety Director shall advise the Board on a monthly basis of all safety concerns, maintain a long-range safety plan and oversee the safety budget. Safety officer will submit a qualified safety plan registration form with the ASAP plan.

IV. SAFETY MANUAL

The Zionsville Little League has developed a Safety Manual related to the League's operations. This manual encompasses the informal plan, which had been developed and utilized by the League over the last 50 years. This plan covers training, first aid, player and volunteer information, injury reporting, facilities and equipment inspection, and rules. A copy of the plan is attached hereto and incorporated herein by reference.

Applicable portions of the plan is printed, posted, and distributed to the board of directors, coaches, concession workers, and other volunteers. A complete copy is posted on the league's Internet website, www.zionsvillelittleleague.org.

V. CODE OF CONDUCT

In conjunction with its Safety Manual the Zionsville Little League has developed a Code of Conduct. The Code of Conduct is a general recitation of the conduct that the Zionsville Little League expects of its participants while utilizing Lions Park. Since the participants conduct goes a long way towards providing a safe environment in which to play baseball and softball, the Code of Conduct is included within Zionsville Little League's Safety Plan. A copy of the code is attached hereto and incorporated herein by reference.

VI. SPORTSMANSHIP

All players, managers, coaches, umpires, volunteers, parents, and spectators are required to conduct themselves in a civil and sportsman like manner. Any party engaging in unwelcome behavior will be asked to leave Zionsville Little League's facilities and Lions Park. The Board of Directors may remove a player, manager, coach, volunteer spectator or umpire who engages in unwelcome behavior from League activities.

ZLL Safety Plan
2014

Zionsville Little League Safety Manual

A primary goal of the Board of Directors of the Zionsville Little League is to insure at all times the safety of its players, spectators and adult volunteers. Accordingly, the Board of Directors has adopted the following guidelines directed towards the safety of its participants.

General

- The Board of Directors of the Zionsville Little League shall appoint one of its members as Safety Director.
- The League shall post at the concession stand a list of its key officials' along with contact information including telephone numbers and email addresses. **Note Appendix B.**
- The League shall post at the concession stand a list of necessary emergency telephone numbers including police, fire, hospital and local doctors. **Note Appendix C.**
- The Board of Directors shall designate volunteers to act as "officer of the day" for every day in which the League has games scheduled. The officer of the day shall make determinations of unsafe conditions as a result of weather, field conditions, field fixtures, disrespectful spectators, players or parents, equipment condition and other safety considerations and shall take immediate action to eliminate the unsafe condition. The officer of the day shall be the ultimate decision maker as to all safety concerns, and all players, adult volunteers, and spectators shall follow the decision and direction of the officer of the day. Failure to abide by the decision of the officer of the day may result in disciplinary action by the President of the Little League.

First- Aid and Training

- Managers, coaches and umpires are encouraged to have training in first aid and CPR
- Fully stocked first-aid kits shall be given to each manager when the equipment bags are handed out prior to the season start.
- Two AED's are located at the park. One is located in the Lions Club and one is located in the concession stands.
- Fundamentals training clinics for players, managers, and coaches shall be conducted by the Middle School and High School coaches or by other qualified parties designated by the Board of Directors.
- Players, managers and coaches are also encouraged to participate in individual training outside the scope of the training provided by the Little League.
- An umpires training clinic shall be conducted by qualified parties designated by the Board of Directors
- All managers shall receive a copy of the Official Little League Rule book.
- First aid training will be offered on March 25/27, 2014

ZLL Safety Plan **2014**

Player and Volunteer Information

- At the time of registration, the League shall obtain an executed Medical Release Form for each player so as to identify any medical problems of each player, the player's physician and emergency contact person. **Note Appendix D**
- At the time of registration, the League shall obtain an adult volunteer information form. Based upon the information provided on this form the League shall conduct a criminal background check on each of its adult volunteers. **Note Appendix E.**

Injury Reporting System

The League has established the following injury reporting system:

- All managers are given an injury report form with their scorebooks and additional report forms are also available at the concession stand.
- At the time of any injury, the officer of the day should be immediately notified.
- The emergency contact person(s) listed on the players Medical Release form is also immediately contacted.
- Appropriate medical attention is provided at the direction of the officer of the day and the emergency contact person.
- The team manager or other responsible adult completes an accident notification form. **Note Appendix F.**
- The accident notification form is given to the officer of the day.
- The report form, thereafter, is provided to the League president, safety officer and secretary within 24 hours for review, investigation, and processing, as necessary.
- All reported injuries are discussed at the next Board of Directors meeting so as to determine whether any remedial action should be taken by the Board to avoid future injuries.

Inspections

- The equipment manager inspects all equipment at the beginning of each year to insure that the equipment is in a safe and functional condition. Before each game, the managers, coaches and umpires are encouraged to examine the equipment to be utilized to insure its safe condition. Equipment is replaced and/or not utilized if determined to be unsafe.
- The maintenance manager to insure that the fields and field fixtures are in a safe and functional condition periodically inspects all fields and field fixtures. Before each game, the managers, coaches and umpires are encouraged to examine the playing field to insure that the field is in a safe playing condition. Any concerns related to the condition of the playing field for field fixtures are to be corrected before the game is played. Playability of any field is the determination of the officer of the day. **A 2014 Facilities Survey is attached as Appendix G.**
- The concession stand manager shall insure that proper safety procedures and training in food handling shall be utilized at all times in the operation of the concession stand.

ZLL Safety Plan
2014

Safety Rules

- All games and/or practices shall be suspended when lightning are present. The decision to suspend play and/or games shall be that of the officer of the day and his or her decision is final. Play shall not resume until twenty minutes after the last sighting of lightning or as directed by the officer of the day.
- No games or practices shall be conducted when field conditions are not good, or lighting is inadequate.
- All team equipment should be stored within the team dugout or behind screens and not within the area defined by the umpire as “in play”.
- Responsibility for keeping bats and loose equipment off the playing field should be designated by the manager to a player or coach.
- A procedure will be established for retrieving foul balls batted out of playing area.
- During warm-up drills players should be spaced so that no one is endangered by wild throws or missed catches.
- Batters must wear Little League approved protective helmets during batting practice and in games.
- The catcher must wear catcher’s helmet, mask, throat guard, long model chest protector, shin guards and protective cup with athletic supporter at all times. **No exceptions. Male players will wear protective cups during practices and games.**
- Except when runner is returning to a base, headfirst slides are not permitted.
- At no time should “horse play” be allowed on the playing field.
- If a player is acting as a base coach that player must wear a batting helmet.
- Players may not wear watches, rings, pins or metallic items during games or practices.
- The catcher must wear catcher’s helmet and mask with a throat guard in warming up pitchers between innings; in the bullpen during a game, and during practices.
- On-deck batters are not permitted (except in the Junior and Senior Divisions)
- All pre-game warm-ups shall be performed within the confines of the playing field and not within areas that are frequented by and endangering spectators.
- Bat swinging shall be allowed only by a batter facing a pitcher in a game or practice.
- No adult or child shall be allowed in the dugout or on the field of play unless designated by a team manager, coach or the umpire.
- No individual shall stand behind the backstop directly behind the umpire.
- All managers and coaches are encouraged to provide a good warm up period for their players before a game or practice.
- Spectators shall be encouraged to sit in area in which they would be less susceptible to being hit by a batted ball.
- During a game all players should be in the dugout unless otherwise directed by the manager, coach or umpire.
- Low Impact balls will be used for younger minor leagues.
- Breakaway bases will be used in all games.
- Outfield warning tracks will be used on major league and above fields.
- Padded fence tops will be used on all fences less than 6 feet high.
- The use of mouth guards, especially for infielders is encouraged.

ZLL Safety Plan
2014

Concession Stand Safety

I. Background

The Zionsville Little League has two concession stands. The concession stands are operated during the time that Little League games are played along with Little League tournaments and several special summer events held in Lions Park where the Zionsville Little League is located. The concession stands have a concession stand manager who is in charge of purchasing all food and drink products sold at both locations. The concession stand manager also oversees the day-to-day operations of the concession stands as well as the training of the paid workers who staff them on a daily basis. A free phone is located in the main concession stand for anyone's use.

II. Food and Drink Offerings

The concession stands offer a wide variety of foods. The popcorn, hot dogs, nachos and barbeque sandwiches are prepared on a daily basis as need. Pizza is ordered and delivered from a local Pizza store and is sold by the slice.

III. Food Handling.

- The concession stand workers utilizing plastic gloves or food handling utensils shall handle all food that is not pre-wrapped or bottled.
- Any worker who appears to be ill will be asked to work on a different day.
- All cooked food shall be disposed of when the concession stand closes at the end of the day.
- All condiments and perishable food shall be refrigerated when not in use.
- All food not utilized when the concession stand closes at the end of the season shall be disposed of.
- All utensils, cooking pots and food handling equipment shall be cleaned on a daily basis.

IV. Training

- The concession stand manager shall train all workers in the handling of food and the operation of the appliances.
- An adult worker shall only operate the popcorn maker and hot dog roaster after training from the concession stand manager or another adult familiar with their operation.
- All workers shall be aware of the location of the first aid kits and fire extinguishers located in the concession stand.

ZLL Safety Plan
2014

V. Rules

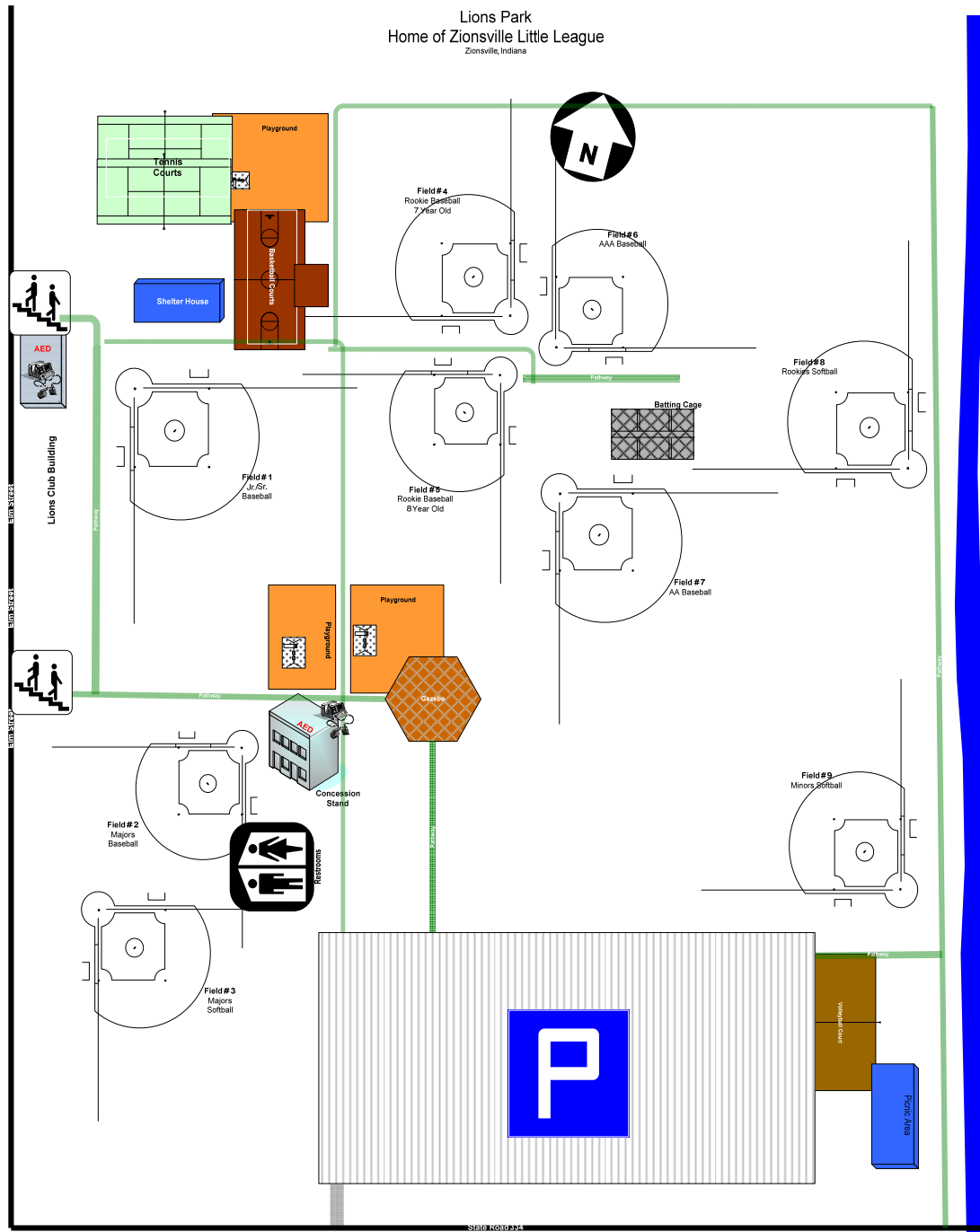
- No children shall be allowed to work in the concession stand unless supervised by an adult.
- All individuals working in the concession stand shall wash their hands before the start of their work shift and after utilizing the restroom facilities.
- All cleaning chemicals shall be stored out of reach of children.
- The concession stand manager on a regular basis to insure that it is in good working order shall inspect all cooking and other appliances.
- The concession stand's doors shall be open and not blocked when workers are in the concession stand.

ZIONSVILLE LITTLE LEAGUE CODE OF CONDUCT

- The parking lots in and around Lions Park are for parking vehicle. There will be no playing in any manner in and/or in close proximity to the parking lots. Individuals driving through the parking lots should keep a close look out for children around the parked vehicles.
- No alcohol shall be allowed in and around the playing fields of Lions Park at the time Little League games or practices are being conducted.
- No profanity shall be use in and around the playing fields of Lions Park at the time Little League games or practices are being conducted.
- No swinging of bats at any time within the walkways, parking lots or common areas of Lions Park. During Little League games and practices the swinging of bats in and around the playing fields should be under the close supervision of an adult.
- During Little League games and practices the throwing of balls in Lions Park should be under the close supervision of an adult.
- There will be no throwing of rocks and other objects.
- There will be no horseplay allowed
- There will be no climbing on fences light poles or backstops.
- Players and spectators should be alert at all times for foul balls and errant throws.
- During a game, players must remain in the dugout and conduct themselves in an orderly fashion at all times. Only players, managers and coaches shall be allowed in the dugout during games.
- After each game, each team must clean up trash in the dugout and around the stands.
- After each game, the teams should rake the diamond and prepare it for the next game.
- Spectators should act in a respectful manner towards other spectators, the players, the manager, the coaches and the umpires.
- Failure to comply with the Code of Conduct may result in disciplinary action by the Zionsville Little League

ZLL Safety Plan
2014

Appendix A



ZLL Safety Plan
2014

Appendix B

ZLL Board Members

Executive Committee Members are bolded.

President	Greg Williams	317-418-5064	gregwilliam@gmail.com
Exec. VP	Pete Huber	317-716-9514	phuber@aahuber.com
Secretary	Liz Ellis	317-701-6837	lellis31@hotmail.com
Treasurer	Andy Belser		abelser@ksmcpa.com
League Info Officer	Bernie Paul	317-730-1939	bpaul@indy.net
Player Agent	Ben McAfee	317-217-9598	bnash_00@yahoo.com
Safety Officer	Mike Rinebold	317-383-6543	mrinebold@ismanet.org
VP Softball	Bill Reid	317-997-5895	billreid44@gmail.com
VP Baseball Coach-Pitch	Bruce Kelley	317-431-8847	bkelleyblue@aol.com
VP Baseball-Kid-Pitch	Steve Conner	317-250-6706	steveconner25@aol.com
VP Baseball Jr/Sr	Steve Conner	317-250-6706	steveconner25@aol.com
VP Maintenance	Randy Judd	317-496-1229	randy@bonedryroofing.com
Player Development - Softball	Troy Goodman	317-695-1728	troyagoodman1@yahoo.com
Player Development - Baseball	Marc Lynn	317-753-7613	mlynn@majacelectric.com
Umpire Officer	Brad Redman	317-294-5081	bredman@aol.com
Sponsorship Officer	Mike Irk	765-242-1643	mpi000@yahoo.com
Uniform Officer	Carrie Barnes	317-698-4619	cbarnes1@indy.rr.com
Equipment Officer	Eric Essley	317-450-5817	eessley@mdwise.org
Special Events Coordinator	Brooks Davis	317-344-2417	brooksdavismd@yahoo.com
Fund-Raising Coordinator	Jay Baker	317-695-3048	jbaker92iu@hotmail.com

ZLL Safety Plan
2014

Appendix C



EMERGENCY PHONE LIST

For Zionsville Little League

EMERGENCY

Zionsville Police/Fire/EMT-----911
Hospital Ambulance-----911
Boone County Sheriff ----- (765) 482-1412
State Police-----897-6220
AAPCC Poison Center----- (800) 222-1222

UTILITIES – EMERGENCY

Vectren Energy Delivery (Gas) ----- (800) 227-1376
Duke Energy (Electric) ----- (800) 521-2232
Indianapolis Water----- (317) 631-1431

Non-Emergency Contact Numbers

Zionsville Police (Non emergency) ----- 873-5967
Zionsville Fire Department (Non emergency) ----- 873-5358
Zionsville Street Department ----- 873-4544
Zionsville Wastewater Dept----- 873-2469

Concession Stand----- 733-8040
Game or Practice Status----- 733-1968
Safety Officer, Mike Rinebold----- (317) 383-6543

Appendix D

ZLL Safety Plan
2014



Little League®
Baseball and Softball
Medical Release



NOTE: To be carried by any Regular Season or Tournament Team Manager together with team roster or eligibility affidavit.

Player: _____ Date of Birth: _____

League Name: _____ I.D. Number: _____

Parent or Guardian Authorization:

In case of emergency, if family physician cannot be reached, I hereby authorize my child to be treated by Certified Emergency Personnel. (i.e. EMT, First Responder, E.R. Physician)

Family Physician: _____ Phone: _____

Address: _____

Hospital Preference: _____

In case of emergency contact:

Name	Phone	Relationship to Player

Name	Phone	Relationship to Player

Please list any allergies/medical problems, including those requiring maintenance medication. (i.e. Diabetic, Asthma, Seizure Disorder)

Medical Diagnosis	Medication	Dosage	Frequency of Dosage

The purpose of the above listed information is to ensure that medical personnel have details of any medical problem which may interfere with or alter treatment.

Date of last Tetanus Toxoid Booster: _____

Mr./Mrs./Ms. _____

Authorized Parent/Guardian Signature

WARNING: Protective equipment cannot prevent all injuries a player might receive while participating in Baseball/Softball.

Little League does not limit participation in its activities on the basis of disability, race, color, creed, national origin, gender, sexual preference or religious preference.

my documents/league supplies/2005/medical release form

rev. 2005.1

Appendix E

Page 14 of 16

ZLL Safety Plan
2014

Appendix F

Activities/Reporting	A Safety Awareness Program's Incident/Injury Tracking Report
League Name: _____ League ID: ____ - ____ - ____ Incident Date: _____	
Field Name/Location: _____ Incident Time: _____	
Injured Person's Name: _____ Date of Birth: _____	
Address: _____ Age: _____ Sex: <input type="checkbox"/> Male <input type="checkbox"/> Female	
City: _____ State _____ ZIP: _____ Home Phone: () _____	
Parent's Name (If Player): _____ Work Phone: () _____	
Parents' Address (If Different): _____ City _____	
Incident occurred while participating in:	
A.) <input type="checkbox"/> Baseball <input type="checkbox"/> Softball <input type="checkbox"/> Challenger <input type="checkbox"/> TAD	
B.) <input type="checkbox"/> Challenger <input type="checkbox"/> T-Ball (5-8) <input type="checkbox"/> Minor (7-12) <input type="checkbox"/> Major (9-12) <input type="checkbox"/> Junior (13-14)	
<input type="checkbox"/> Senior (14-16) <input type="checkbox"/> Big League (16-18)	
C.) <input type="checkbox"/> Tryout <input type="checkbox"/> Practice <input type="checkbox"/> Game <input type="checkbox"/> Tournament <input type="checkbox"/> Special Event	
<input type="checkbox"/> Travel to <input type="checkbox"/> Travel from <input type="checkbox"/> Other (Describe): _____	
Position/Role of person(s) involved in incident:	
D.) <input type="checkbox"/> Batter <input type="checkbox"/> Baserunner <input type="checkbox"/> Pitcher <input type="checkbox"/> Catcher <input type="checkbox"/> First Base <input type="checkbox"/> Second	
<input type="checkbox"/> Third <input type="checkbox"/> Short Stop <input type="checkbox"/> Left Field <input type="checkbox"/> Center Field <input type="checkbox"/> Right Field <input type="checkbox"/> Dugout	
<input type="checkbox"/> Umpire <input type="checkbox"/> Coach/Manager <input type="checkbox"/> Spectator <input type="checkbox"/> Volunteer <input type="checkbox"/> Other: _____	
Type of injury: _____	
Was first aid required? <input type="checkbox"/> Yes <input type="checkbox"/> No If yes, what: _____	
Was professional medical treatment required? <input type="checkbox"/> Yes <input type="checkbox"/> No If yes, what: _____	
(If yes, the player must present a non-restrictive medical release prior to to being allowed in a game or practice.)	
Type of incident and location:	
A.) On Primary Playing Field B.) Adjacent to Playing Field D.) Off Ball Field	
<input type="checkbox"/> Base Path: <input type="checkbox"/> Running or <input type="checkbox"/> Sliding <input type="checkbox"/> Seating Area <input type="checkbox"/> Travel:	
<input type="checkbox"/> Hit by Ball: <input type="checkbox"/> Pitched or <input type="checkbox"/> Thrown or <input type="checkbox"/> Batted <input type="checkbox"/> Parking Area <input type="checkbox"/> Car or <input type="checkbox"/> Bike or	
<input type="checkbox"/> Collision with: <input type="checkbox"/> Player or <input type="checkbox"/> Structure C.) Concession Area <input type="checkbox"/> Walking	
<input type="checkbox"/> Grounds Defect <input type="checkbox"/> Volunteer Worker <input type="checkbox"/> League Activity	
<input type="checkbox"/> Other: _____ <input type="checkbox"/> Customer/Bystander <input type="checkbox"/> Other: _____	
Please give a short description of incident: _____	

Could this accident have been avoided? How: _____	
This form is for Little League purposes only, to report safety hazards, unsafe practices and/or to contribute positive ideas in order to improve league safety. When an accident occurs, obtain as much information as possible. For all claims or injuries which could become claims, please fill out and turn in the official Little League Baseball Accident Notification Form available from your league president and send to Little League Headquarters in Williamsport (Attention: Dan Kirby, Risk Management Department). Also, provide your District Safety Officer with a copy for District files. All personal injuries should be reported to Williamsport as soon as possible.	
Prepared By/Position: _____ Phone Number: (____) _____	
Signature: _____ Date: _____	

ZLL Safety Plan
2014

Appendix G

See attached 2014 Facility Survey

LITTLE LEAGUE® BASEBALL & SOFTBALL **NATIONAL FACILITY SURVEY**

2014



League Name: Zionsville Little League

District #: 08

ID #: 114-08-19

(if needed) ID #: _____

(if needed) ID #: _____

City: Zionsville State: IN

President: Greg Williams

Safety Officer: Mike Rinebold

Address: 225 Redding Ct

Address: 2982 Stone Creek Drive

City: Zionsville

City: Zionsville

State: IN ZIP: 46077

State: IN ZIP: 46077

Phone (work): 317-418-5064

Phone (work): 3174547718

Phone (home): 317-873-3420

Phone (home): 3179735045

Email: gregwilliam@gmail.com

Email: mrinebold@ismanet.org

PLANS FOR FUTURE NEEDS

What are league's plans for improvements?	Indicate number of fields in boxes below.		
	Next 12 mons.	1-2 yrs.	2+ yrs.
a. New fields	0	0	0
b. Basepath/infield	0	0	0
c. Bases	0	0	0
d. Scoreboards	0	0	0
e. Pressbox	1	0	0
f. Concession stand	0	0	0
g. Restrooms	0	0	0
h. Field lighting	0	0	0
i. Warning track	0	0	0
j. Bleachers	3	0	0
k. Fencing	1	0	0
l. Bull pens	0	0	0
m. Dugouts	2	0	0
n. Other (specify):	0	0	0

Please complete for each field. Use additional space if necessary.

Field 1
Field 2
Field 3
Field 4
Field 5
Field 6
Field 7
Field 8
Field 9

Early Bird Date: April 01, 2014
Final Deadline Date: August 01, 2014

Shipping address:
Little League International
539 US Route 15 Hwy
S. Williamsport, PA 17702

No.	Questions	Field 1	Field 2	Field 3	Field 4	Field 5	Field 6	Field 7
1	How many cars can park in designated parking areas for this field?	None	101 or more	101 or more	101 or more	101 or more	101 or more	101 or more
2	How many people will your bleachers seat for this field?	1-100	1-100	1-100	1-100	1-100	1-100	1-100
3.a.	Are the bleachers made of wood on this field?	Yes	Yes	Yes	Yes	Yes	Yes	No
3.b.	Are the bleachers made of metal on this field?	Yes	Yes	Yes	No	No	Yes	Yes
3.c.	Are bleachers for this field made of material other than wood or metal?	No	No	No	No	No	No	No
4	If bleachers are made of metal, is a ground wire attached to a ground rod?	No	No	No	No	No	No	No
5	If bleachers are made of wood, are they inspected annually for safety?	Yes	Yes	Yes	Yes	Yes	Yes	No
6	Is there a safety railing at the top/back of bleachers for this field?	No	No	Yes	No	No	No	No
7	Is there a handrail up the sides of bleachers for this field?	No	No	Yes	No	No	No	No
8.a.	Is permanent telephone service available for this field?	No	No	No	No	No	No	No
8.b.	Is cellular telephone service available for this field?	Yes	Yes	Yes	Yes	Yes	Yes	Yes
9.a.	Is a permanent public address system available for this field?	Yes	Yes	No	No	No	Yes	No
9.b.	Is a portable public address system available for this field?	No	No	No	No	No	No	No
10	Is there a pressbox for this field?	Yes	Yes	Yes	No	No	Yes	No
11	Is there a scoreboard for this field?	Yes	Yes	Yes	No	No	Yes	No
12	Are adequate bathroom facilities available for this field?	Yes	Yes	Yes	Yes	Yes	Yes	Yes
13	Are permanent concession stands available for this field?	Yes	Yes	Yes	Yes	Yes	Yes	Yes
14	Are mobile concession stands available for this field?	No	No	No	No	No	No	No
15	Is this field completely fenced?	Yes	Yes	Yes	No	No	No	No
16.a.	Is the fencing made of chainlink on this field?	Yes	Yes	Yes	Yes	Yes	Yes	Yes
16.b.	Is the fencing made of wood on this field?	No	No	No	No	No	No	No
16.c.	Is the fencing made of wire on this field?	No	No	No	No	No	No	No
17.a.	Is the basepath material on this field is sand, clay or soil mix?	Yes	Yes	Yes	No	No	Yes	Yes
17.b.	Is the basepath material on this field is ground burnt brick?	Yes	Yes	Yes	No	No	No	No
17.c	Is the basepath material on this field other than sand, clay, soil mix or ground...	No	No	No	Yes	Yes	No	No
17.d	If yes to other material, what is the basepath material on this field?				crushed ag	crushed ag	grass	

No.	Questions	Field 1	Field 2	Field 3	Field 4	Field 5	Field 6	Field 7
18.a.	Is non-caustic lime used to mark the baselines on this field?	No	No	No	No	No	No	No
18.b.	Is spray paint used to mark the baselines on this field?	Yes	Yes	Yes	Yes	Yes	Yes	Yes
18.c.	Is commerical marking used to mark the baselines on this field?	No	No	No	No	No	No	No
19	Is the infield surface grass?	No	Yes	No	No	No	Yes	Yes
20	Does this field have a conventional dirt pitching mound?	No	Yes	Yes	Yes	Yes	Yes	Yes
21	Does this field have a temporary pitching mound?	Yes	No	No	No	No	No	No
22	Are there foul poles on this field?	Yes	Yes	Yes	Yes	Yes	Yes	No
23	Is there a backstop behind home plate on this field?	Yes	Yes	Yes	Yes	Yes	Yes	Yes
24.a.	Is there an outfield warning track for this field?	No	No	No	No	No	No	No
24.b.	If yes, what width is the warning track?	0.00	0.00	0.00	0.00	0.00	0.00	0.00
25	Is there a batter's eye (screen/covering) at center field on this field?	No	No	No	No	No	No	No
26	Is there a pitcher's eye (screen/covering) behind home plate on this field?	Yes	Yes	Yes	No	No	No	No
27	Does this field have protective fences in front of the dugouts?	Yes	Yes	Yes	Yes	Yes	Yes	Yes
28	Is there a protected on-deck batter's area on this field?	No	No	No	No	No	No	No
29	Are fenced limited access bull pens available for this field?	No	No	No	No	No	No	No
30	Is a first aid kit provided for this field?	Yes	Yes	Yes	Yes	Yes	Yes	Yes
31.a.	Do bleachers for this field have overhead screens for spectator foul ball protec...	No	Yes	No	No	No	Yes	Yes
31.b.	Do bleachers for this field have fencing behind for spectator foul ball protecti...	No	No	No	No	No	No	No
32	Do your bases disengage from their anchors? (Mandatory since 2008)	Yes	Yes	Yes	Yes	Yes	Yes	Yes
33	Is this field lighted?	Yes	Yes	Yes	No	No	Yes	No
34.a.	Are light levels at/above Little League standards?	No	No	No	No	No	No	No
34.b.	Light levels on this field are not known?	Yes	Yes	Yes	No	No	No	No
35.a.	Are there wood poles on this field?	Yes	Yes	Yes	No	No	Yes	No
35.b.	Are there steel poles on this field?	No	No	No	No	No	No	No
35.c.	Are there concrete poles on this field?	No	No	No	No	No	No	No
36	Is the electrical wiring to each pole on this field is underground?	Yes	Yes	Yes	No	No	Yes	No

No.	Questions	Field 1	Field 2	Field 3	Field 4	Field 5	Field 6	Field 7
37	Are there ground wires connected to ground rods on each pole on this field?	Yes	Yes	Yes	No	No	Yes	No
38.a.	Was the electrical system on this field tested/inspected in last two years?	Yes	Yes	Yes	No	No	Yes	No
38.b.	What month/year was electrical system testing done on this field?	06/2013	06/2013	06/2013			06/2012	
38.c.	Were the light levels on this field tested/inspected in the last two years?	Yes	No	No	No	No	No	No
38.d.	What month/year was the light level testing done on this field?	06/2012						
39.a.	Was the electrical system on this field tested/inspected by a qualified technici...	Yes	Yes	Yes	No	No	Yes	No
39.b.	Were the light levels on this field tested/inspected by a qualified technician?	Yes	No	No	No	No	Yes	No
40.a.	Does field have limitation on amount of time for practice?	Yes	Yes	Yes	Yes	Yes	Yes	Yes
40.b.	Does field have limitation on number of teams or games?	No	No	No	No	No	No	No
40.c.	Does field have limitation on scheduling and/or timing?	Yes	Yes	Yes	Yes	Yes	Yes	Yes
41.a.	Is this field owned by a municipality?	No	No	No	No	No	No	No
41.b.	Is this field owned by a school?	No	No	No	No	No	No	No
41.c.	Is this field owned by a league?	No	No	No	No	No	No	No
42.a.	Municipality is responsible for operational energy costs on this field?	No	No	No	No	No	No	No
42.b.	School is responsible for operational energy costs on this field?	No	No	No	No	No	No	No
42.c.	League is responsible for operational energy costs on this field?	Yes	Yes	Yes	Yes	Yes	Yes	Yes
43.a.	Municipality is responsible for operational maintenance on this field?	No	No	No	No	No	No	No
43.b.	School is responsible for operational maintenance on this field?	No	No	No	No	No	No	No
43.c.	League is responsible for operational maintenance on this field?	Yes	Yes	Yes	Yes	Yes	Yes	Yes
44.a.	Municipality is responsible for improvements on this field?	No	No	No	No	No	No	No
44.b.	School is responsible for improvements on this field?	No	No	No	No	No	No	No
44.c.	League is responsible for improvements on this field?	Yes	Yes	Yes	Yes	Yes	Yes	Yes
44.d.	Other group is responsible for improvements on this field?	No	No	No	No	No	No	No
45.a.	Is T-ball and Minor League baseball played on this field?	Yes	Yes	Yes	Yes	Yes	Yes	Yes
45.b.	Is Major division baseball played on this field?	Yes	Yes	No	No	No	Yes	Yes
45.c.	Is Junior, Senior and Big League baseball played on this field?	Yes	No	No	No	No	No	No

[illegible]

No.	Questions	Field 8	Field 9					
1	How many cars can park in designated parking areas for this field?	101 or more	101 or more					
2	How many people will your bleachers seat for this field?	1-100	None/NA					
3.a.	Are the bleachers made of wood on this field?	No	No					
3.b.	Are the bleachers made of metal on this field?	Yes	No					
3.c.	Are bleachers for this field made of material other than wood or metal?	No	No					
4	If bleachers are made of metal, is a ground wire attached to a ground rod?	No	No					
5	If bleachers are made of wood, are they inspected annually for safety?	No	No					
6	Is there a safety railing at the top/back of bleachers for this field?	No	No					
7	Is there a handrail up the sides of bleachers for this field?	No	No					
8.a.	Is permanent telephone service available for this field?	No	No					
8.b.	Is cellular telephone service available for this field?	Yes	Yes					
9.a.	Is a permanent public address system available for this field?	No	No					
9.b.	Is a portable public address system available for this field?	No	No					
10	Is there a pressbox for this field?	No	No					
11	Is there a scoreboard for this field?	No	No					
12	Are adequate bathroom facilities available for this field?	Yes	No					
13	Are permanent concession stands available for this field?	Yes	No					
14	Are mobile concession stands available for this field?	No	No					
15	Is this field completely fenced?	No	No					
16.a.	Is the fencing made of chainlink on this field?	Yes	Yes					
16.b.	Is the fencing made of wood on this field?	No	No					
16.c.	Is the fencing made of wire on this field?	No	No					
17.a.	Is the basepath material on this field is sand, clay or soil mix?	No	No					
17.b.	Is the basepath material on this field is ground burnt brick?	No	No					
17.c	Is the basepath material on this field other than sand, clay, soil mix or ground...	Yes	Yes					
17.d	If yes to other material, what is the basepath material on this field?	crushed ag	crushed ag					

No.	Questions	Field 8	Field 9					
18.a.	Is non-caustic lime used to mark the baselines on this field?	No	No					
18.b.	Is spray paint used to mark the baselines on this field?	Yes	Yes					
18.c.	Is commerical marking used to mark the baselines on this field?	No	No					
19	Is the infield surface grass?	No	No					
20	Does this field have a conventional dirt pitching mound?	No	No					
21	Does this field have a temporary pitching mound?	No	No					
22	Are there foul poles on this field?	No	No					
23	Is there a backstop behind home plate on this field?	Yes	Yes					
24.a.	Is there an outfield warning track for this field?	No	No					
24.b.	If yes, what width is the warning track?	0.00	0.00					
25	Is there a batter's eye (screen/covering) at center field on this field?	No	No					
26	Is there a pitcher's eye (screen/covering) behind home plate on this field?	No	No					
27	Does this field have protective fences in front of the dugouts?	Yes	Yes					
28	Is there a protected on-deck batter's area on this field?	No	No					
29	Are fenced limited access bull pens available for this field?	No	No					
30	Is a first aid kit provided for this field?	Yes	Yes					
31.a.	Do bleachers for this field have overhead screens for spectator foul ball protec...	No	No					
31.b.	Do bleachers for this field have fencing behind for spectator foul ball protecti...	No	No					
32	Do your bases disengage from their anchors? (Mandatory since 2008)	Yes	Yes					
33	Is this field lighted?	No	No					
34.a.	Are light levels at/above Little League standards?	No	No					
34.b.	Light levels on this field are not known?	No	No					
35.a.	Are there wood poles on this field?	No	No					
35.b.	Are there steel poles on this field?	No	No					
35.c.	Are there concrete poles on this field?	No	No					
36	Is the electrical wiring to each pole on this field is underground?	No	No					

No.	Questions	Field 8	Field 9					
37	Are there ground wires connected to ground rods on each pole on this field?	No	No					
38.a.	Was the electrical system on this field tested/inspected in last two years?	No	No					
38.b.	What month/year was electrical system testing done on this field?							
38.c.	Were the light levels on this field tested/inspected in the last two years?	No	No					
38.d.	What month/year was the light level testing done on this field?							
39.a.	Was the electrical system on this field tested/inspected by a qualified technici...	No	No					
39.b.	Were the light levels on this field tested/inspected by a qualified technician?	No	No					
40.a.	Does field have limitation on amount of time for practice?	Yes	Yes					
40.b.	Does field have limitation on number of teams or games?	No	No					
40.c.	Does field have limitation on scheduling and/or timing?	Yes	Yes					
41.a.	Is this field owned by a municipality?	No	No					
41.b.	Is this field owned by a school?	No	No					
41.c.	Is this field owned by a league?	No	No					
42.a.	Municipality is responsible for operational energy costs on this field?	No	No					
42.b.	School is responsible for operational energy costs on this field?	No	No					
42.c.	League is responsible for operational energy costs on this field?	Yes	Yes					
43.a.	Municipality is responsible for operational maintenance on this field?	No	No					
43.b.	School is responsible for operational maintenance on this field?	No	No					
43.c.	League is responsible for operational maintenance on this field?	Yes	Yes					
44.a.	Municipality is responsible for improvements on this field?	No	No					
44.b.	School is responsible for improvements on this field?	No	No					
44.c.	League is responsible for improvements on this field?	Yes	Yes					
44.d.	Other group is responsible for improvements on this field?	No	No					
45.a.	Is T-ball and Minor League baseball played on this field?	Yes	Yes					
45.b.	Is Major division baseball played on this field?	No	No					
45.c.	Is Junior, Senior and Big League baseball played on this field?	No	No					

[illegible]

This page confirms the completion of the 2014 online Facility Survey

Zionsville Little League
League Name

08
District #

114-08-19
League ID #

Submit this page with your hardcopy ASAP plan rather than the completed 2014 Facility Survey